

ESTD
1977

PRODUCT
CATALOGUE



ESTD 1977

Transmission
Line Products

Empowering Railways for a Greener Tomorrow

Founded in 1977, Transmission Line Products (TLP) emerged to address the growing electrification needs of India's state electricity boards. From its inception, TLP has been at the forefront of innovation, providing crucial solutions for transmission lines and railway electrification.

In 1985, TLP expanded its horizons when Indian Railways enlisted its expertise to manufacture Overhead Electrification (OHE) fittings essential for railway electrification. This collaboration marked the beginning of TLP's commitment to enhancing India's rail infrastructure. Over the years, TLP has continuously evolved, developing and manufacturing high-quality products tailored to both transmission lines and railway electrification.

The year 2013 marked a new chapter as TLP ventured into the metro sector with Jaipur Metro. Since then, TLP has become a trusted supplier for various metro projects across the country, underscoring its versatility and reliability in urban transit solutions.

In 2017, TLP was tasked by the Dedicated Freight Corridor (DFC) to design specialized components for their infrastructure. Today, TLP stands as one of the largest suppliers of these critical items to the DFC, highlighting its role in supporting large-scale freight operations.

A strategic shift occurred in 2019 when TLP refocused exclusively on railway projects, discontinuing its work on transmission lines to dedicate resources to advancing railway technologies. This pivot has allowed TLP to hone its expertise and expand its offerings.

Transmission Line Products (TLP) has the pleasure of announcing its latest innovation in the rolling stock segment in the railway sector: the development of a state-of-the-art 3rd rail current collector shoe. In 2023, TLP achieved this significant milestone by producing its first shoe for TRCC, used in the third rail, which was certified by Kolkata Metro in 2024. Additionally, TLP made its debut in rolling stock by crafting a beam assembly to support the Train Protection and Warning System (TPWS) for Kolkata Metro, showcasing its ability to integrate advanced safety systems into rail infrastructure.

These groundbreaking components, meticulously engineered by our team, have already earned a certificate of appreciation from Kolkata Metro, a testament to its excellence and reliability. As TLP forges ahead in the realm of rolling stock, we are proud to contribute to the future of rail infrastructure with solutions that set new industry standards.

Embracing the "Make in India" initiative, TLP has also become an approved manufacturer of all steel-fabricated items for companies like Furrer + Frey India Pvt. Ltd. since 2023. TLP has expanded its manufacturing capabilities to include a broader range of railway components beyond OHE, reinforcing its position as a leader in the railway industry.

Driven by a legacy of excellence and innovation, Transmission Line Products continues to advance the future of railway electrification and urban transit, contributing to the modernization and efficiency of India's rail network.

Company Profile



Vision

To make quality products and become the trusted name for railways across the world



Our Head Office
Transmission Line Products
102, Central Plaza,
2/6 Sarat Bose Road
Kolkata - 700019
West Bengal



Our Factory/Office
Transmission Line Products
Sankrail Industrial Park, NH-6,
PO Dhulagori, PS Sankrail,
Howrah - 711302 West Bengal



QUALITY

From its inception, TLP has stood out from the competitors due to its reputation for quality. Not only do we follow clients' requirements religiously, we also question and add to it based on our experience. Our focus on automation, our strict quality control procedures and trained employees form the basis of our well earned reputation.



ADAPTABILITY

Adaptability is part of our DNA. We know that change is inevitable. Our decisions are made based on our vast experience, trained staff, equipment that meet the need and direction of the market. This is why we are known in the country for our ability to make new products for our clients.



CLIENT SATISFACTION

Client satisfaction is why we have some of the oldest customers in the industry. Our quick turnaround, focus on quality and adaptability allow us to service our clients to their utmost satisfaction.

Company Values

TLP Customers

This is an illustrative list



TLP User Segments





Contents

Furrer & Frey India Pvt. Ltd. Products

Iron & Steel7

New Products

Al & Al Alloys Clamps10

Al & Al Alloys Connectors12

Al & Al Alloys Lugs13

Cu & Cu Alloys Lugs14

Iron & Steel Clamps15

Iron & Steel Lugs17

Iron & Steel Rolling Stock Items18

Newly Approved Items

Strain Clamp Link20

Normal Bent Steady Arm Hook.....20

Counter Weight Eye Rod20

Double Clevis Assembly20

Tee Connector21

Straight Connector.....21

Guy Rod 10.9 m)21

Guy Rod (12.3 m)21

Our Customized AC Products

88.9 OD Connectors23

50 mm IPS Connectors26

L Shaped Links26

Compression Sleeves26

Cu & Al Bronze27

Our Standard AC Aluminium Products

Caps29

Clamps30

Clips30

36 mm IPS Connectors34

50 mm IPS Connectors38

Joints44

Sleeves44

Splices44

Our Standard AC Copper Products

Brackets46

Clamps46

Clips51

Connectors52

Sleeves54

Splice54

Thimbles54

DFC Special Items

Guy Rods56

Counter Weight Eye Rod61



Contents

Our Standard AC Iron & Steel Products

Adjusters.....	63
Anchor Items	65
Brackets.....	67
Clamps	67
Clevis	68
Clips	69
Connectors	71
Counter Weight Items	72
Counter Weight Items	73
Distance Rods	73
Electrodes.....	73
Eye	74
Guy Rods	75
Hook	77
Links	78
Mast Fittings	79
Plates	80
Sleeves	82
Swivels	82
Termination Fittings	83

DC-AC Customized and Standard Products

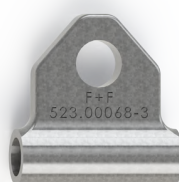
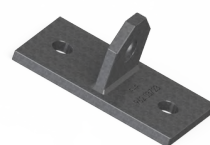
Parallel Clamps	86
Ending Clamps	87

Adjusters.....	88
Parallel Clamps	91
Splicing Clamps	91
Suspension Clamps	91
Dropper Clips	92
Swivel Clips	93



Furrer & Frey India Pvt. Ltd. Products Iron & Steel

Our Products



Furrer & Frey India Pvt. Ltd. Products

Iron & Steel

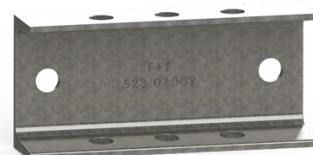
52300932-1



ISMC 100 Profile

Weight Its weight is about 3.5 kg
Usage This item is used for tie arrangement on mast fittings

52301009



ISMC 100 Channel

Weight Its weight is about 2.0 kg
Usage This item is used in termination bracket fittings

96203723



Fixation Plate Fabrication

Weight Its weight is about 1.2 kg
Usage This item is used in tensioning on profile fittings

37200460-1



60x60x6 Backing Angle

Weight Its weight is about 1.7 kg
Usage This item is used for tie arrangement on mast fittings

Furrer & Frey India Pvt. Ltd. Products

Iron & Steel

52300068-3



Tongue Swivel

Weight Its weight is about 0.4 kg
Usage This item is used in termination bracket fittings



New Products

Our Products



New Products (Al & Al Alloys)

Clamps

7040 (M)



Mast Earth Clamp for TEW
240 sq. mm. conductor

Weight Its weight is about 0.8 kg
Usage This item is used to support TEW
240 sq. mm. conductor wrapped
with a single layer of 1.27x7.62
mm armour tape and ferrule

SC-12



Support clamp assembly to suit 93.3 sq.
mm. ACSR conductor

Weight Its weight is about 0.3 kg
Usage This item is used to provide
support to a conductor at
masts

SC-20



Support clamp assembly to suit 240 sq.
mm. AAC Conductor

Weight Its weight is about 0.3 kg
Usage This item is used to provide
support to a conductor at
masts

TPG-81



Parallel Groove Clamp suitable for 93.3 sq.
mm. to 93.3 sq. mm. ACSR OPC Conductor

Weight Its weight is about 0.4 kg
Usage This item is used to clamp 93.3 sq.
mm. to 93.3 sq. mm. ACSR OPC
conductor

New Products (Al & Al Alloys)

Clamps

TTC-4-24



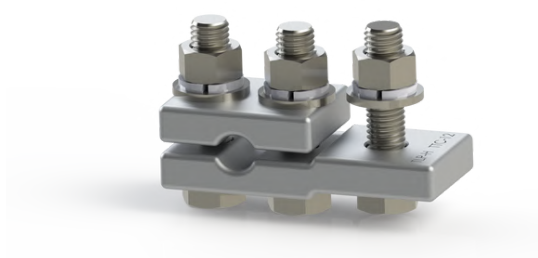
RC Termination Clamp for 233 sq. mm.
aluminium conductor

Weight Its weight is about 2.0 kg
Usage This item is used in termination
 clamp for 233 sq. mm. AAC
 conductor

New Products (Al & Al Alloys)

Connectors

TTC-12



T-Connector to suit Ø 12.7 mm
earthwire conductor

Weight Its weight is about 0.4 kg

Usage This item is used in
earthwire fittings

New Products (Al & Al Alloys)

Lugs

TGL-1



Aluminium lug to suit Ø10.98 mm
earthwire

Weight	Its weight is about 0.1 kg
Usage	This item is used to connect an earthwire conductor to a terminal

New Products (Cu & Cu Alloys)

Lugs

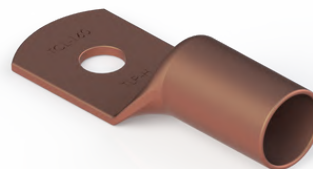
TCL-11



Double compression copper lug to suit 70 sq. mm. copper conductor

Weight Its weight is about 0.1 kg
Usage This item is used to connect a 70 sq. mm. conductor to a terminal

TCL-160



Copper lug to suit 160 sq. mm. copper jumper

Weight Its weight is about 0.1 kg
Usage This item is used to connect a 160 sq. mm. jumper to a terminal

New Products (Iron & Steel)

Clamps

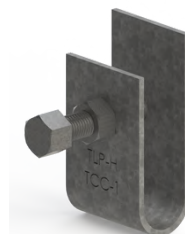
TC-200



Tunnel C-Clamp

Weight Its weight is about 1.6 kg
Usage This item is used in fixing 200 mm. diameter pipe in Rigid Overhead Catenary System (ROCS)

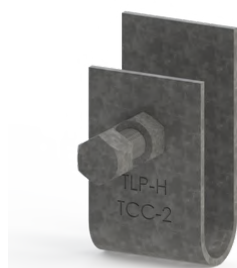
TCC-1



Cleat type GI clamp suitable for 75x12 mm GS Flat

Weight Its weight is about 0.3 kg
Usage This item is used in termination fittings

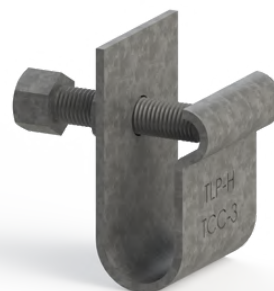
TCC-2



Cleat type GI clamp suitable for 50x6 mm GS Flat

Weight Its weight is about 0.3 kg
Usage This item is used in termination fittings

TCC-3



Cleat type GI clamp suitable for Ø10.98 mm Earthwire

Weight Its weight is about 0.3 kg
Usage This item is used in termination fittings

New Products (Iron & Steel)

Clamps

TSC-70



C-Clamp for 70 sq. mm. OPC wire support on tunnel lining wall

Weight Its weight is about 0.1 kg
Usage This item is used to provide support to a 70 sq. mm. OPC wire by fixing it on tunnel lining wall fittings

W1133-1A



Cable fixing clamp (Typ-1)

Weight Its weight is about 0.3 kg
Usage This item is used for fixing cables in Rigid Overhead Catenary System (ROCS)

W1133-1B



Cable fixing clamp (Typ-2)

Weight Its weight is about 0.8 kg
Usage This item is used for fixing cables in Rigid Overhead Catenary System (ROCS)

New Products (Iron & Steel)

Lugs

TGL-240



G.I. Lug

Weight

Its weight is about 0.3 kg

Usage

This item is used to connect a 240 sq. mm. conductor to a terminal

New Products (Iron & Steel)

Rolling Stock Items

MEDHA-0-003



Third rail current collector shoe for Medha rakes (MR 400)

Weight Its weight is about 4.0 kg
Usage This item is used as a shoe for TRCC in Medha rakes (MR 400) on metros using a third rail for their electrification

MR-0-005



Modified Beam Assembly for Train Protection and Warning System (TPWS) Medha DTC Bogie (MR 400)

Weight Its weight is about 20.0 kg
Usage This item is used in metro rail under the front and end bogie and provides support to the Train Protection and Warning System (TPWS)



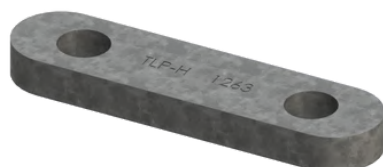
Our Newly Approved Items

Our Products



Newly Approved Items

1263



Strain Clamp Link

Weight Its weight is about 0.7 kg
Usage This is used in termination fittings

2523



Normal Bent Steady Arm Hook

Weight Its weight is about 0.4 kg
Usage It is used in steady arm

5094-1



Counter Weight Eye Rod (0.65 m)

Weight Its weight is about 2.037 kg
Usage Style 1 to be used in circular counter weight assembly and Style 2 to be used in trapezoidal counter weight assembly

3010, 3011-2



Double Clevis Assembly

Weight Its weight is about 0.975 kg
Usage Double Clevis Assembly is used in termination fittings of feeder, return conductor and return feeder

Newly Approved Items

TI/DRG/OHE/FTGFE/RDSO/0020/22/0



Tee Connector Suitable for 20 mm GS wire to 20 mm GS wire

Weight Its weight is about 1.5 kg
Usage This connector is used in earthing arrangement

TI/DRG/OHE/FTGFE/RDSO/0020/21/0



Straight Connector Suitable for 20 mm GS wire to 20 mm GS wire

Weight Its weight is about 1.5 kg
Usage This connector is used in earthing arrangement

5005-1



Guy Rod (10.9 m long)

Weight Its weight is about 44 kg
Usage These are rods of diameter 25 mm and are used in mast fittings. Their height and weight differ based on where it is to be used.

5005-2



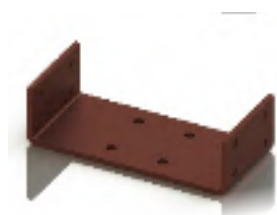
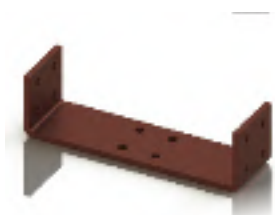
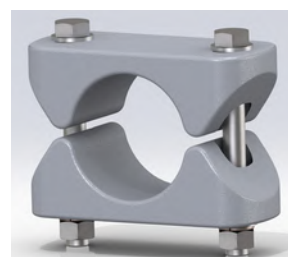
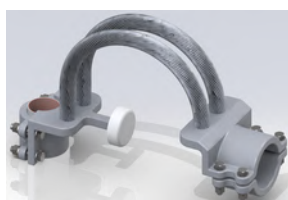
Guy Rod (12.3 m long)

Weight Its weight is about 47 kg
Usage These are rods of diameter 25 mm and are used in mast fittings. Their height and weight differ based on where it is to be used.



Our Customized AC Products

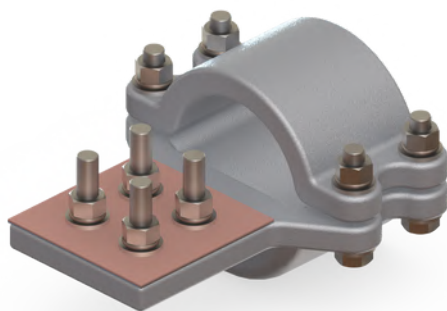
Our Products



Customized Aluminium Items

88.9 OD Connectors

T889-1



Rigid Bi-metallic Terminal Connector suitable for 88.9 mm Dia. Al. Tubular busbar to Terminal pad of 25KV Isolator/CT

Weight Its weight is about 2.7kg
Usage This item is used to connect Aluminium busbar to Terminal Pad

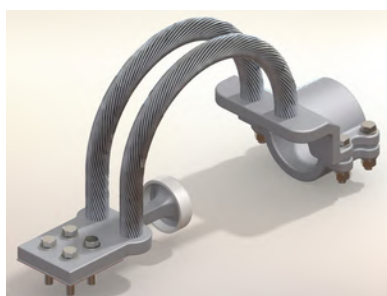
T889-2



Expansion Type Terminal Connector to suit 88.9 mm dia Al. Tubular busbar to Terminal Pad of 25KV CT / Isolator / Terminal Pad

Weight Its weight is about 2.14 kg
Usage This item is used to connect Tubular busbar to Current Transformer or Isolator or Terminal pad

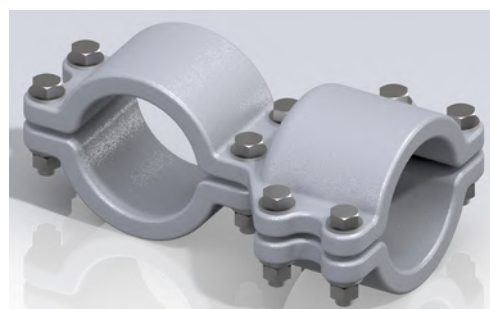
T889-3



25kv system rigid Bus Splice connector to suit 88.9 mm O/D Al. tube on both ways

Weight Its weight is about 3.84 kg
Usage This item is used to connect Al. Tube from both sides

T889-4



25KV system TEE connector to suit 88.9 mm O/D Al. Tubular busbar to 88.9 mm Al. Tubular busbar.

Weight Its weight is about 3.0 kg
Usage It is used to connect Tubular busbar with another Tubular busbar

Customized Aluminium Items

88.9 OD Connectors

T889-5



25kv system Tee connector to suit 88.9 mm o/d Al. Tubular busbar to AAC Spider conductor

Weight Its weight is about 2.60 kg

Usage It is used to connect Tubular busbar to AAC Spider conductor

T889-6

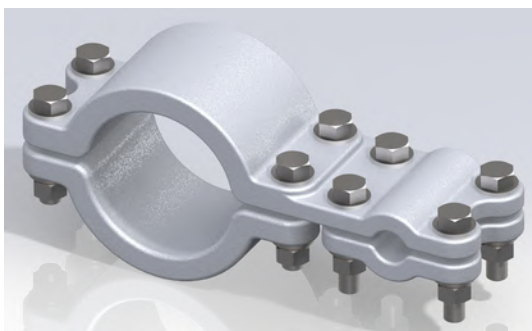


Sliding clamp for 88.9 mm o/d Al. Tubular busbar

Weight Its weight is about 1.80 kg

Usage It is used on Tubular busbar

T889-7

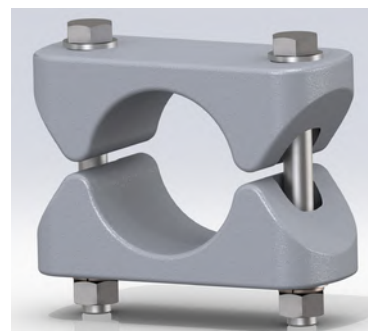


Rigid Through connector to suit 88.9 mm O/D. Al. Tubular busbar to AAC Spider conductor

Weight Its weight is about 1.66 kg

Usage This item is used to connect Tubular busbar & AAC Spider conductor for 25kv Potential Transformer Type-II

T889-8



Rigid Connector on Section Insulator to suit 88.9 mm O/D Al. Tubular Busbar

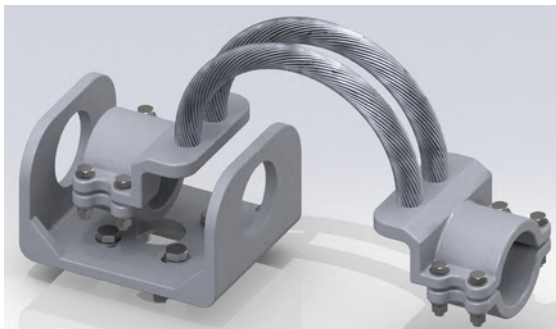
Weight Its weight is about 2.90 kg

Usage This item is used on Tubular busbar

Customized Aluminium Items

88.9 OD Connectors

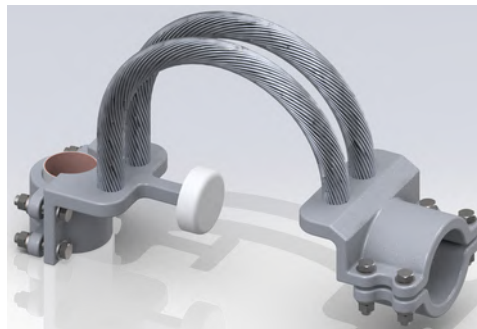
T889-9



Expansion Type Bus Connector on Section Insulator to suit 88.9mm o/d Al. Tubular Busbar

Weight Its weight is about 6.11 kg
Usage This item is used on Tubular busbar

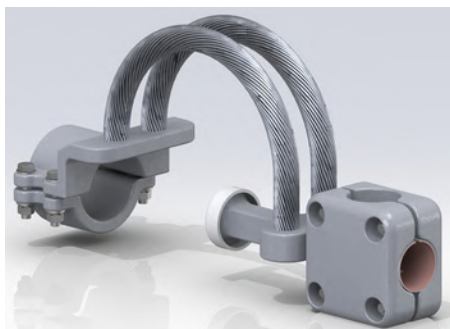
T889-10



Expansion Type terminal Connector to suit 88.9mm o/d Al. Tubular Busbar to 60 dia Terminal

Weight Its weight is about 6.67 kg
Usage This item is used on Tubular busbar

T889-11

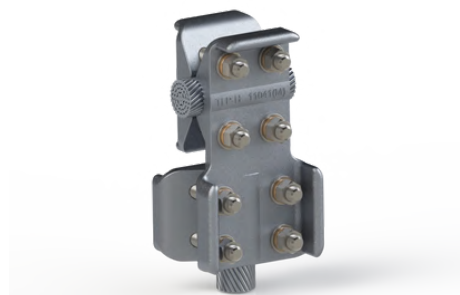


Expansion Type Universal Bi-Metallic Type Terminal Connector 60 mm dia. Cu. Stud to 88.9 mm dia. Busbar

Weight Its weight is about 9.7 kg
Usage This item is used to connect 60 mm dia. Cu. Stud to 88.9 dia. Busbar

50 mm IPS Connectors

11040 (M)



TEE Connector to Suit 21 mm. dia. ACSR Panther

Weight Its weight is about 2.21 kg
Usage It is used to connect 21 mm. dia. ACSR Panther at right angle to the 21 mm. dia. ACSR Panther

Customized Aluminium Items

50 mm IPS Connectors

11110 (M)



Rigid Through Connector to Suit 50 dia. Al. Tubular Busbar & 'Panther' AAC conductor for 25 kv PT Type-II

Weight Its weight is about 2.14 kg

Usage It is used to connect 50 dia. Al. Tubular Busbar & 'Panther' AAC conductor for 25 kv PT Type-II

L Shaped Links

TLL-30



L Shaped Link for Connector to Terminal Pad

Weight Its weight is about

Usage It is used to connect Connector to Terminal Pad

Compression Sleeves

S-330

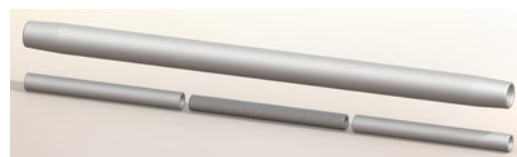


Compression Sleeve suitable for AAAC 288 sq. mm. (22.05 mm dia.) conductor

Weight Its weight is about 1.2 kg

Usage This item is used to compress AAAC 288 sq. mm. conductor

S-331



Compression Sleeve suitable for ACSR 93 sq. mm. (12.50 mm dia.) conductor

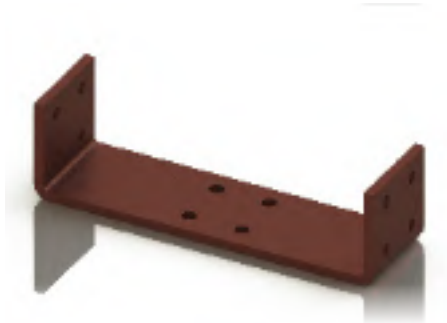
Weight Its weight is about 1.2 kg

Usage This item is used to compress ACSR 93 sq. mm. conductor

Customized Copper Items

Cu & Al Bronze

100 mm width Copper Plate



100 mm Width Copper Plate

Weight Its weight is about 4.6 kg

Usage This item is used in Pune Metro

160 mm Width Copper Plate



160 mm Width Copper Plate

Weight Its weight is about 7.3 kg

Usage This item is used in Mumbai Metro



Our Standard AC Aluminium Products

Our Products



Standard Aluminium Items

Caps

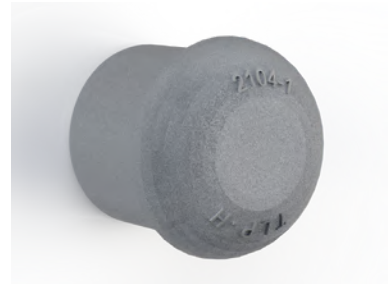
2064-1



Tube Cap 30 mm

Weight Its weight is about 0.04 kg
Usage This item is used in cantilever fittings to seal the end of large bracket tube

2104-1



Tube Cap 40mm

Weight Its weight is about 0.07 kg
Usage This item is use in cantilever fittings to seal end of bracket tube

2423-1



Tube Cap 25mm

Weight Its weight is about 0.04 kg
Usage This item is used in cantilever fittings to seal end of bracket tube

Standard Aluminium Items

Clamps



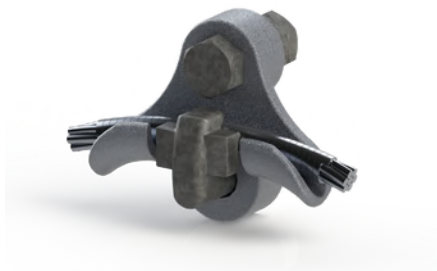
Standard Anti-wind Clamp

	Weight	Usage
2550-1	Its weight is about 0.21 kg	This anti-wind clamp is to be used with BFB steady arm (identification number 2540)
2550-2	Its weight is about 0.25 kg	This anti-wind clamp is to be used with BFB steady arm (identification number 2390)
2550-3	Its weight is about 0.25 kg	This anti-wind clamp is to be used with BFB section steady arm of tramway type OHE (regulated)

Standard Aluminium Items

Clamps

7040



Earth Wire Mast Clamp

Weight Its weight is about 0.67 kg
Usage To support 6/1/4.09 mm. ACSR earth wire (RACCOON) or AAC 93.3 sq. mm. conductor or 7/3.66 mm. G.I. Earthwire conductor

TLP Drg No.TC-3-19 Alternative to R.I. No. 7050



Earthwire Strain Clamp

Weight Its weight is about 1.479 kg
Usage Used as a termination fitting in 6/1/4.09 mm. ACSR earth wire (RACCOON) or AAC 93.3 sq. mm. conductor or 7/3.66 mm. G.I. Earthwire conductor

TC-4-34 / TC-4-35



Strain Clamp For 'Zebra' ACSR

Weight Its weight is about 2.36kg
Usage This is used as a termination clamp for ACSR 'Zebra'

Standard Aluminium Items

Clamps

1540



Bi-metallic Parallel Clamp (10/20)

Weight Its weight is about 0.47 kg
Usage This item is used to clamp SPIDER aluminium conductor to 65 sq. mm. cadmium copper catenary (diameter of 10.5 mm) or small jumper with 1 mm thick Bi-metallic strip

1550



Parallel Clamp (20/20)

Weight Its weight is about 0.86 kg
Usage This item is used to clamp Aluminium large jumper of diameter 21 mm or SPIDER Aluminium conductor to another Aluminium large jumper of diameter 21 mm or another SPIDER Aluminium conductor

1560



Bi-metallic Parallel Clamp (15/20)

Weight Its weight is about 0.95 kg
Usage This item is used to clamp SPIDER aluminium conductor to large jumper wire (105) or feeder wire (150) with 1 mm thick bi-metallic strip

Standard Aluminium Items

Clamps

SK-123



Bimetallic Parallel Groove Clamp(14/9)

Weight Its weight is about 0.626 kg
Usage It is used to clamp 19/2.79 Al. conductor and 9 mm dia. small jumper with 1 mm. thick bi-metallic strip

SK-231



Parallel Groove Clamp(18/14)

Weight Its weight is about 0.62 kg
Usage It is used to clamp Al. alloy conductor of 14 mm. dia. and 15.2 mm dia. large jumper with 1 mm. thick bi-metallic strip

1580



Large Suspension Clamp 20 mm

Weight Its weight is about 1.46 kg
Usage It is used to clamp 19/3.99 AAC SPIDER conductor

Standard Aluminium Items

36 mm IPS Connectors

6480



36 mm Aluminium Bus Terminal to 25 kv Isolator (Rigid Type) Pad with Bi-metallic Strip

Weight Its weight is about 1.75 kg
Usage Aluminium Bus Terminal is used to connect 25 kv Isolator (Rigid Type) Pad

6490



36 mm Aluminium Bus Splice

Weight Its weight is about 2.23 kg
Usage It is used for splicing straight joints in 36 mm o/d Aluminium Bus Bar

6500



36 mm Aluminium Bus TEE Connector

Weight Its weight is about 2.206 kg
Usage It is used for connecting 36 mm o/d Aluminium bus bar at right angle

6510



36 mm Aluminium TEE Terminal

Weight Its weight is about 1.23 kg
Usage It is used to connect terminal pad to 36 mm o/d tubular aluminium busbar

Standard Aluminium Items

36 mm IPS Connectors

6520



36/15 mm Tap Connector

Weight Its weight is about 1.93 kg
Usage Cadmium catenary (65) tapped from 36 mm o/d Aluminium Bus Bar for drop out fuse switch in switching station

6530



36/20 Terminal Connector

Weight Its weight is about 1.82 kg
Usage It is used for connecting the 20 mm SPIDER conductor to the 36 mm aluminium bus bar at traction sub-station.

6550



36 mm Aluminium Flexible Bus Splice with Bi-metallic Strip

Weight Its weight is about 5.26 kg
Usage It is used for making expansion joints in long 36 mm aluminium bus bar

6560



36 mm Aluminium Bus Splice Cum Tee Connector

Weight Its weight is about 3.54 kg
Usage It is used for splicing and connecting 36 mm o/d aluminium bus bar at right angles.

Standard Aluminium Items

36 mm IPS Connectors

6570



Flexible Connector for 25 kv Circuit Breaker 25 Kv Interruptor & 25 Kv side of 13.5/20 MVA Traction Transformer

Weight Its weight is about 5.13 kg
Usage It is used for making expansion joints from 36 mm aluminium bus bar to 30 mm copper stud

6580



36/20 mm Tap Connector

Weight Its weight is about 1.95 kg
Usage It is used for connecting 20 mm SPIDER connector to the 36 mm Aluminium Bus Bar

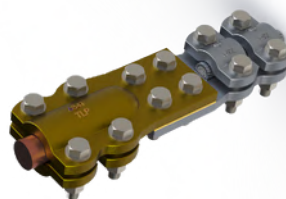
6590



20 mm Aluminium Bus Bar Tee Connector

Weight Its weight is about 1.73 kg
Usage It is used for connecting 20 mm aluminium busbar or SPIDER conductor at right angle in sub-station

6800



Bimetallic Terminal Connector for 30 mm Cu. Terminal Stud & 20 mm Spider AAC. (For 132 Kv side of 13.5/20 MvA Traction Power Transformer 132 Kv CT. & 132 Kv PT.)

Weight Its weight is about 2.68 kg
Usage It is used to connect 30 mm. Cu. terminal stud to 20 mm AAC SPIDER conductor

Standard Aluminium Items

36 mm IPS Connectors

6830



Terminal Connector Suitable for 20 mm 'SPIDER' AAc with Terminal Pad of 132 Kv Isolator, 132 Kv CB & 25 Kv PT Type

Weight Its weight is about 1.32 kg
Usage It is used to connect 20 mm SPIDER AAC to terminal pad of 132 kv isolator / 132 kv CT & 25 kv PT type I & II

6830-1



Terminal Connector for Aluminium Conductors (bolted type)

Weight Its weight is about 0.978 kg
Usage It is used to connect 20 mm SPIDER AAC to terminal pad of 132 kv isolator / 132 kv CT & 25 kv PT type I & II

Standard Aluminium Items

50 mm IPS Connectors

11010



Bi-metallic Terminal Connector to Suit 'Zebra' ACSR Conductor and 30 Dia. Copper Stud of CB/CT Traction Power Transformer

Weight Its weight is about 2.36 kg
Usage It is used to connect 30 mm dia. Cu. stud to 'Zebra' ACSR conductor

11020



EXPAN. Bimetallic Terminal Connector Suitable for 50 Dia. Al. Tubular Busbar to 60 Dia. Cu. Stud of 25 kv CT

Weight Its weight is about 6.5 kg
Usage It is used to connect 50 dia. Al. Tubular Busbar to 60 dia. Cu. Stud of 25 kv Current Transformer

11030



220 kv System Bi-metallic Terminal Connector to suit 'Zebra' (28.58 mm. dia.) ACSR conductor to Al./Cu. Pad of CB / Isolator / CT

Weight Its weight is about 1.88 kg
Usage It is used to connect 'Zebra' (28.58 mm. dia.) ACSR conductor to Al./Cu. Pad of of CB / Isolator / CT

11040



220 kv System Tee Connector to Suit 'Zebra' (28.58 mm dia.) ACSR Conductor on Both Ways

Weight Its weight is about 2.15 kg
Usage It is used to connect 'Zebra' (28.58 mm dia.) ACSR conductor to another 'Zebra' (28.58 mm dia.) ACSR conductor at right angles

Standard Aluminium Items

50 mm IPS Connectors

11050



220 KV. System Rigid Connector on SI to Suit 'Zebra' (28.58 Ø) ACSR Conductor

Weight Its weight is about 1.03 kg

Usage It is used to connect 'Zebra' (28.58 Ø) ACSR Conductor

11060



Expansion Type Terminal Connector to Suit 50 dia. Al. Tubular Busbar to Terminal Pad of 25 kv CT/Isolator/CB & Interruptor

Weight Its weight is about 4.62 kg

Usage It is used to connect expansion type connector to suit 50 dia. Al. Tubular Busbar to Terminal Pad of 25 kv CT/Isolator/CB & Interruptor

11070



Rigid Type Bimetallic Terminal Connector Suitable For 50 Dia Al. Tubular Busbar To 30 Dia Cu. Stud Of 25 Kv Current Transformer

Weight Its weight is about 1.77 kg It is used

Usage to connect Rigid Type Bimetallic Terminal Connector Suitable For 50 Dia Al. Tubular Busbar To 30 Dia Cu. Stud Of 25 Kv Current Transformer

11080



Rigid Type Terminal Connector Suitable For 50 dia Al. Tubular Busbar To 60 dia Cu. Stud Of 25 kv Current Transformer

Weight Its weight is about 2.30 kg

Usage It is used to connect Rigid Type Bi-metallic Terminal Connector Suitable For 50 dia Al. Tubular Busbar To 30 dia Cu. Stud Of 25 kv Current Transformer

Standard Aluminium Items

50 mm IPS Connectors

11090



Rigid Bimetallic Terminal Connector Suitable For 50 dia Al. Tubular Busbar to Terminal Pad Of 25 kv Isolator/CT

Weight Its weight is about 1.77 kg

Usage It is used to connect Rigid Bimetallic Terminal Connector Suitable For 50 dia Al. Tubular Busbar to Terminal Pad Of 25 kv Isolator/CT

11100



Expansion Type Bi-Metallic Terminal Connector to Suit 50 dia. Al. Tubular Busbar To 30 dia. Cu. Stud Of 25 kv CT / Booster Transformer

Weight Its weight is about 0.768 kg

Usage It is used to connect 50 dia. Al. Tubular Busbar To 30 dia. Cu. Stud of 25 kv CT / Booster Transformer

11110



Rigid Through Connector to Suit 50 dia. Al. Tubular Busbar & 'Spider' AAC conductor for 25 kv PT Type-II

Weight Its weight is about 1.91 kg

Usage It is used to connect 50 dia. Al. Tubular Busbar & 'Spider' AAC conductor for 25 kv PT Type-II

11120



Rigid Terminal Connector Suitable For 20 mm dia. Al. Conductor to Terminal Pad Of 110 kv Isolator & 25 kv PT Type I & Type II

Weight Its weight is about 1.43 kg

Usage It is used to connect 20 mm dia. Al. Conductor to Terminal Pad Of 110 kv Isolator & 25 kv PT Type I & Type II

Standard Aluminium Items

50 mm IPS Connectors

11130



Interconnector Suitable For 50 mm O/D Al. Busbar & 'Spider' AAC Conductor (For 25kv P.T. Type-I)

Weight Its weight is about 0.884 kg
Usage It is used to connect 50 mm dia Al. Busbar & 'Spider' AAC Conductor (For 25kv P.T. Type-I)

11140



25 kv System Tee Connector to Suit 50 O/D Al. Tube & 'Spider' AAC Conductor

Weight Its weight is about 1.94 kg
Usage It is used to connect 50 O/D Al. Tube & 'Spider' AAC Conductor

11150



25 kv System Tee Connector to Suit 50 O/D Al. Tubular Busbar to 50 O/D Al. Tubular Busbar

Weight Its weight is about 2.31 kg
Usage It is used to connect 50 o/d Al. Tubular Busbar to 50 o/d Al. Tubular Busbar

11180



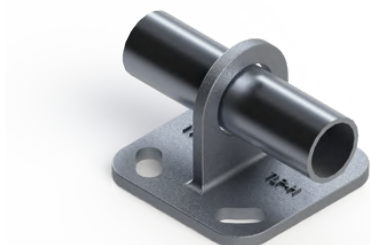
25 KV. System Rigid Bus Splice Connector to Suit 50 O/D. Al Tube on Both Ways

Weight Its weight is about 2.16 kg
Usage It is used to connect 50 o/d Al tube on both sides

Standard Aluminium Items

50 mm IPS Connectors

11190



25 kv System Sliding Clamp for 50 mm O/D Aluminium Busbar

Weight Its weight is about 1.16 kg

Usage It is used to connect 50 mm Aluminium Busbar

11200



25 kv System Rigid Connector on SI to suit 50 mm O/D. Aluminium Busbar

Weight Its weight is about 1.10 kg

Usage It is used to connect 50 mm o/d Aluminium busbar

11210



25 kv System Expansion Bus Coupler on SI to Suit 50 O/D Al. Tube

Weight Its weight is about 6.97 kg

Usage It is used to connect Expansion Bus Coupler on SI to 50 o/d Al. Tube

11220



Expansion Type Terminal Connector for 25 kv 60 mm Dia. Terminal for Traction Power Transformer

Weight Approx. 5.7 Kg.

Usage This item is used in Traction Power Transformers

Standard Aluminium Items

50 mm IPS Connectors

11230



Expansion Type Terminal Connector for 25 kv 30 mm Dia. Terminal for Traction Power Transformer

Weight Approx. 5.4 Kg.

Usage This item is used with Traction Power Transformers

11240



25 kv System Tee Connector to Suit 36 O/D Al. Tubular Busbar To 50 O/D Al. Tubular Busbar

Weight Its weight is about 2.17 kg

Usage It is used to connect 36 mm o/d Al. Tubular Busbar To 50 mm o/d Al. Tubular Busbar

Standard Aluminium Items

Joints

1610-1



Compression Joint

Weight Its weight is about 0.510 kg
Usage It is used for splicing 19/3.99 mm AAC SPIDER

Sleeves

1640 / 1641-1



Repair Sleeve (Compression Type)

Weight Its weight is about 0.26 kg
Usage It is used for repairing the damaged portion of the SPIDER conductor using a hydraulic compressor

Splices

AAJ-608



Compression Joint (Splice) for 93.3 sq. mm. ACSR RACCOON

Weight Its weight is about 1.390 kg
Usage It is used as a splice for 93.3 sq. mm. ACSR RACCOON



Our Standard AC Copper Products

Our Products



Standard Copper Items

Brackets

2380



Hook Bracket (Large)

Weight Its weight is about 0.8 kg
Usage Hook Brackets are used at bridge face cantilevers

2130

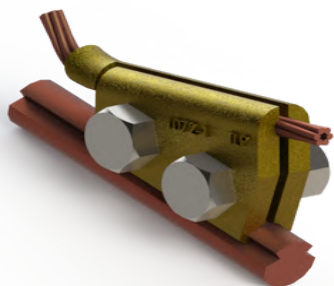


Large Catenary Suspension Bracket

Weight Its weight is about 1.1 kg
Usage These brackets are used on bracket tubes with outer diameter of 49 mm

Clamps

1070-1



Bridle Wire Clamp (6 mm)

Weight Its weight is about 0.2 kg
Usage This item is used for connection of Bridle wire with contact wire at both ends of cantilever.

2140



Catenary Direct Clamp (Large)

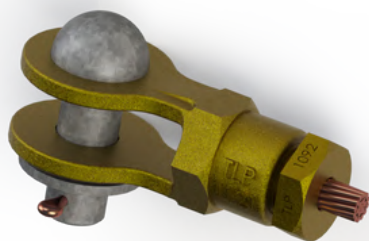
Weight Its weight is about 0.8 kg
Usage This clamp is used in two places.

- It is used to fasten catenary directly on a bracket tube with an outer diameter of 49 mm.
- It is also used in regulated tramway OHE. It is used to fasten bridle wire on a bracket tube with an outer diameter of 49 mm.

Standard Copper Items

Clamps

1120



Catenary Ending Clamp (65)

Weight Its weight is about 0.4 kg
Usage This ending clamp is used with stranded cadmium copper catenary wires with a size of 19/2.10 mm.

1130



Feeder Ending Clamps (150)

Weight Its weight is about 0.9 kg
Usage This ending clamp is used with a standard copper conductor of size 37/2.25 mm

1140



Large Span Wire Ending Clamp (130)

Weight Its weight is about 0.9 kg
Usage This ending clamps is used with large cadmium copper span wire (130 mm²) with a size of 37/2.10 mm

1360



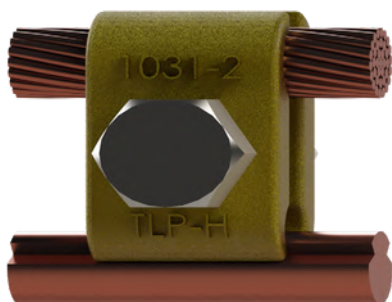
Steel Wire Ending Clamp (90)

Weight Weight – Its weight is about 0.9 kg
Usage This ending clamp is used on galvanized steel wire of size 19/2.6 mm

Standard Copper Items

Clamps

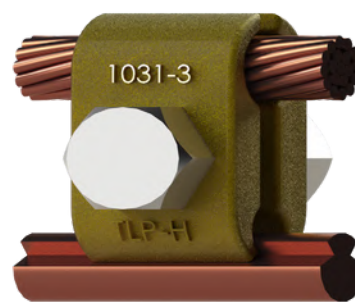
1030-2



Contact Wire Parallel Clamp (Large)

Weight Its weight is about 0.2 kg
Usage This item is used for connection of 150 sq. mm feeder or 105 sq.mm large jumper wire to 107 sq. mm contact or 65 sq. mm catenary wire.

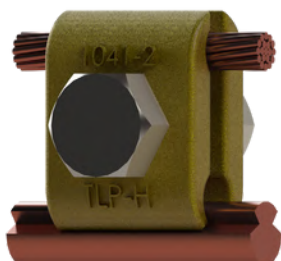
1030-3



Parallel Clamp (157 – 65/107/150)

Weight Its weight is about 0.2 kg
Usage This item is used for connection of 157 sq. mm jumper wire to 150 sq. mm contact wire or 65 sq. mm catenary wire.

1040-2



Contact Wire Parallel Clamp (Small)

Weight Its weight is about 0.2 kg
Usage This item is used for connection of 107 sq. mm contact wire or 65 sq.mm catenary Wire to 50 sq. mm Small jumper or 65 sq. mm catenary wire.

1050-2



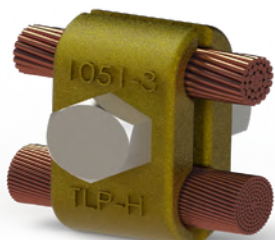
Parallel Clamp (150/105 – 150)

Weight Its weight is about 0.2 kg
Usage This item is used for connection of 105 Sq.mm large jumper or 150 sq.mm feeder wire.

Standard Copper Items

Clamps

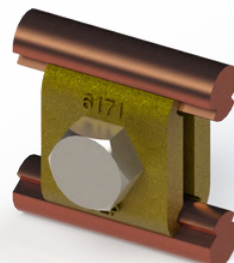
1050-3



Parallel Clamp (150/160)

Weight Its weight is about 0.3 kg
Usage This item is used for connection of 150 sq. mm HDBC cross feeder to 160 sq.mm large jumper.

6170



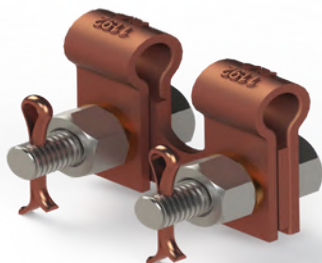
Parallel Clamp (Double Contact Wire)

Weight Its weight is about 0.1 kg
Usage This items is used for connection of 107 sq.mm contact wire to 107 sq.mm Contact wire.

Standard Copper Items

Clamps

1310



Pull Off Clamp

Weight Its weight is about 1.1 kg
Usage This clamp is used in pull off assembly

1160



Suspension Clamp

Weight Its weight is about 0.5 kg
Usage This suspension clamp is used for suspension of Catenary Wire of size 65 mm² with a diameter of 10.5 mm

1170



Double Suspension Clamp

Weight Its weight is about 0.7 kg
Usage This clamp is used for suspension of either of the following
 2 Catenary wires of 65 mm² of diameter 10.50 mm or
 Galvanized steel wire of size 19/2.5 mm and Catenary wire of 65 mm²

Clevis

1270-1



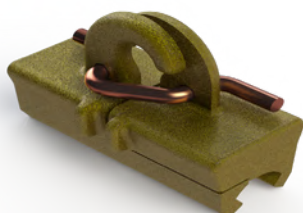
Suspension Clevis (18 mm)

Weight Its weight is about 0.2 kg
Usage This clevis is used for suspension arrangement with a 9 tonne insulator

Standard Copper Items

Clips

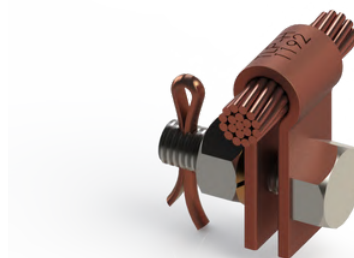
1180



Contact Wire Dropper Clip (107)

Weight Its weight is about 0.07 kg
Usage This clip is used to clamp dropper with catenary wire

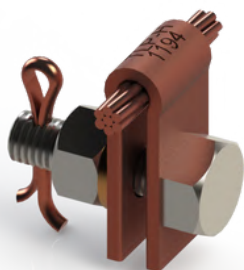
1192



Catenary Dropper Clip

Weight Its weight is about 0.04 kg
Usage This clip is used with 19/2.1 mm cadmium copper catenary wire and dropper wire with a diameter of 5 mm.

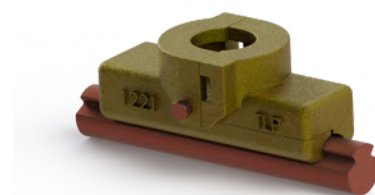
1194



Bridle Wire Dropper Clip

Weight Its weight is about 0.03 kg
Usage This clip is to be used with 7/2.1 mm cadmium copper conductor and dropper wire of 5 mm diameter.

1220

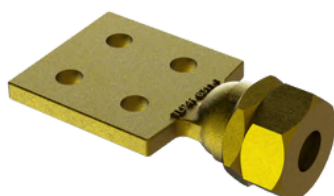


Contact Wire Swivel Clip

Weight Its weight is about 0.2 kg
Usage This item is used with 107 sq. mm. contact wire in BFB steady arm to hold & support the contact wire in ohe cantilever

Standard Copper Items Connectors

6310-1

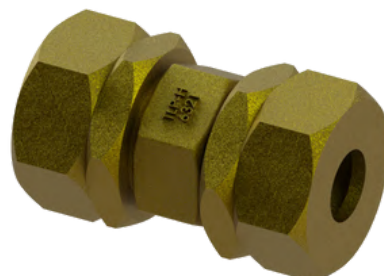


18 mm Bus Terminal (Multiple Bolt)

Weight Its weight is about 1.0 kg

Usage This terminal is used to connect bus bar of 18 mm diameter

6320



18 mm Bus Splice

Weight Its weight is about 1 kg

Usage This splice is used with bus bar of diameter 18 mm

6330



18 mm Bus Tee Joint

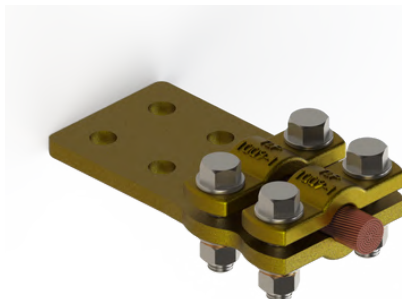
Weight Its weight is about 1.8 kg

Usage This tee joint is used with a bus whose diameter is 18 mm

Standard Copper Items

Connectors

1009



Terminal Connector (19 mm) Multiple Hole (Bolted Type)

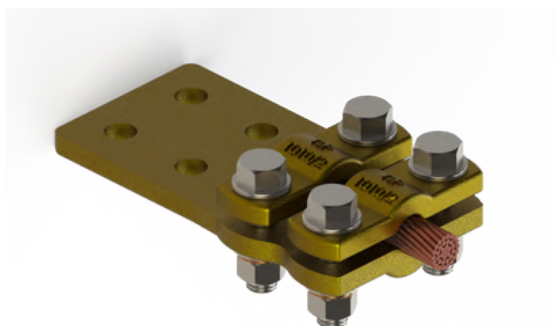
Weight Its weight is about 1.3 kg

Usage The connector shall be used for connection of 19/7/1.25 mm (160 mm²) annealed stranded copper large jumper to the following

- 36 mm aluminium bus terminal of Feeding Posts (FP), Sub-sectioning and Paralleling Posts (SSP), Sectioning Posts (SP) and
- BT location locations

It is also used for the connection of isolator to OHE.

1010



Terminal Connector (15 mm) Multiple Hole (Bolted Type)

Weight Its weight is about 1.3 kg

Usage The connector shall be used for connection of 19/7/1.016 mm (105 mm²) annealed stranded copper large jumper to the following

36 mm aluminium bus terminal of Feeding Posts (FP), Sub-sectioning and Paralleling Posts (SSP), Sectioning Posts (SP) and

BT location locations

It is also used for the connection of isolator to OHE.

Standard Copper Items

Sleeves

2125



Bridle Wire Sleeve

Weight Its weight is about 0.009 kg
Usage The sleeves are used with catenary direct clamp (2140) when used with the bridle wire of diameter 6.5 mm for regulated tramway OHE as well as at the suspension clamp (1160/1170)

Splice

1090



Catenary Splice (65)

Weight Its weight is about 0.4 kg
Usage This splice is used with 19/2.10 stranded cadmium copper catenary wire whose diameter is 10.5 mm

1080-1



Contact Wire Splice for 107 mm²

Weight Its weight is about 0.9 kg
Usage This is used to splice contact wire of size 107 mm²

Thimbles

1350

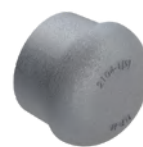


Thimble (10 mm)

Weight Its weight is about 0.03 kg
Usage This thimble is used for pull-off using stranded conductors of diameter up to 10 mm



DFC Special Items



Our Products

DFC Special Items

Guy Rods



Guy Rod DIA

	Weight	Usage
5005 (S)	Its weight is about 49.58 kg	It is to be used in Guy Rod assembly
5006 (S)	Its weight is about 22.28 kg	It is to be used in Guy Rod assembly

1161 (S)



Single Suspension Clamp Body

Weight	Its weight is about 0.7 kg
Usage	It is used to clamp catenary wires of dia. 65 sq. mm.

DFC Special Items

1171 (S)

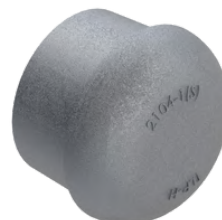


Double Suspension Clamp Body

Weight Its weight is about 0.85 kg

Usage It is used to clamp catenary wires of dia. 65 sq. mm.

2104-1 (S)



Tube cap (70 mm)

Weight Its weight is about 0.18 kg

Usage It is an end fitting or 70 mm tube or busbar

2131 (S) & 2132 (S)



Large Catenary Suspension Bracket
Top & Bottom Special

Weight Its weight is about 2.9 kg

Usage This item is used to hold 70 mm. bracket tubes

2161-2 (S1) & 2162-2 (S1)



Large Register Arm Hook
(Top & Bottom) Special

Weight Its weight is about 2.2 kg

Usage It is used to clamp brackets tubes of dia. 70 mm.

DFC Special Items

2161-2 (S1) & 2162-2 (S2)



Strut Fitting on Large Bracket Tube
(Top & Bottom)

Weight Its weight is about 2.3 kg
Usage This item is used to clamp bracket tubes of dia. 70 mm for strut fitting

2161-2 (S2) & 2162-2 (S3)



Strut Fitting on Stay Tube of o/d 33.7 mm. (Top & Bottom)

Weight Its weight is about 1.0 kg
Usage This item is used to clamp bracket tubes of 33.7 mm

2277 (S)



Its weight is about 0.29 kg

Weight Its weight is about 2.9 kg
Usage This item is used to clip 70 mm Bracket Tube

2392 (S)



BFB Steady Arm Swivel Special

Weight Its weight is about 0.52 kg
Usage This item is assembled along with BFB to complete the cantilever

DFC Special Items

2402-1 (S)



Modified Tubular Stay Arm
Adjuster for DFC

Weight Its weight is about 2.4 kg
Usage This item is used as an adjuster to
modify the length of the cantilever
as desired

2403-2 (S)



Stay Tube Sleeve 55/33.7 mm

Weight Its weight is about 2.2 kg
Usage This item is used along with stay
sleeve

2422-2 (S1)



Register Arm Eye Piece Special

Weight Its weight is about 0.40 kg
Usage This item is assembled along with
tube to complete the cantilever

2422-2 (S2)



Register Arm Eye Piece Special

Weight Its weight is about 0.36 kg
Usage This item is assembled along with
tube to complete the cantilever

DFC Special Items

2422-2 (S3)



Strut Tube End Fitting

Weight Its weight is about 0.60 kg
Usage This item is used in 33.7 mm Strut tube end fittings

2502 (S)



Anti Wind Stay Wire

Weight Its weight is about 0.09 kg
Usage It is used along with 2392 (S)

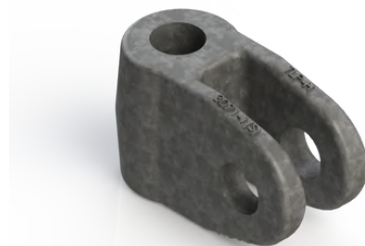
2504(S)



Eye Clip for Antiwind Stay With 4mm Packing Piece

Weight Its weight is about 0.75 kg
Usage It is used to clamp stay tubes

3071(S)



Mast Hinge Joint

Weight Its weight is about 1.5 kg
Usage This item is used on masts as a joint

DFC Special Items

Counter Weight Eye Rod

5095 (S)



Counter Weight Eye Rod (1.3m)

Weight Its weight is about 3.5 kg

Usage It is used to hold counter weights



Our Standard AC Iron & Steel Products

Our Products



Standard Iron & Steel Items

Adjusters

5020



9 Tonne Adjuster (Both side eye type)

Weight Its weight is about 2.7 kg

Usage It is used in termination of conductors

5020-1



9 Tonne Adjuster (eye and clevis type)

Weight Its weight is about 2.9 kg

Usage It is used in termination of conductors

5020-2



9 Tonne Adjuster (double clevis type)

Weight Its weight is about 3.2 kg

Usage It is used in termination of conductors

Iron & Steel Items

Adjusters



Tubular Stay Adjuster

	Weight	Usage
2402	Its weight is about 1.6 kg	This has 12 holes
2402-1	Its weight is about 2.0 kg	This has 16 holes

2432



Raised Register Arm Adjuster (25 mm)

Weight	Its weights is about 1.7 kg
Usage	It is used in Raised Register Arm Assembly

Iron & Steel Items

Anchor Items



Anchor Bolt

5001-3

Its weight is about 2.0 kg

This is used as dwarf mast anchor

5007-1



Anchor 'V' Bolt

Weight Its weight is about 2.6 kg

Usage This bolt is used for anchoring of guy rods

5008



Anchor Loop

Weight Its weight is about 13.8 kg

Usage This is used for anchoring of guy rods

Standard Iron & Steel Items

Anchor Items

5030



Anchor Double Strap

Weight Its weight is about 1.2 kg

Usage This is used at termination and
suspension arrangement

Standard Iron & Steel Items

Brackets

2361-1



25 mm Drop Bracket

Weight Its weight is about 1.1 kg
Usage It is used with BFB steady arm assembly 2390

Clamps

2490-2



25 mm Steady Arm Clamp

Weight Its weight is about 0.7 kg
Usage It is used on 25 mm nominal bore Register Arm Tube

6094



Post Insulator Jumper Clamp

Weight Its weight is about 0.4 kg
Usage It is used when aluminium jumper is directly supported on post insulator

6095



Post Insulator Bus Bar Clamp

Weight Its weight is about 0.3 kg
Usage It is used where aluminium bus bar is directly supported on Post Insulator

Standard Iron & Steel Items

Clevis

3071-1



Mast Bracket Clevis (Forged)

Weight Its weight is about 0.950 kg
Usage It is used in railway ohe cantilever with mast bracket to hold the bracket tube and provide support to the cantilever.

3072



Mast Bracket Clevis Pin

Weight Its weight is about 0.155 kg
Usage This mast bracket clevis pin is used to assemble mast bracket clevis & mast bracket swivel

5041-1



18 mm Single Clevis

Weight Its weight is about 0.8 kg
Usage This component is used in termination hardware

Standard Iron & Steel Items

Clevis

5322-1

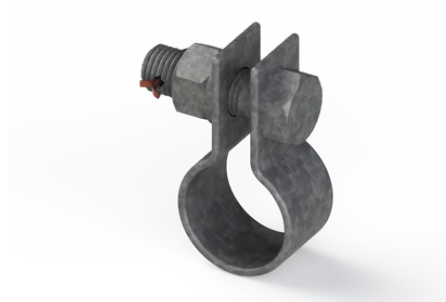


Clevis & Eye

Weight Its weight is about 0.6 kg
Usage This item will be used with 3:1 ratio three pulley type regulating equipment

Clips

2274-1



Dropper Clip (38) for Standard Bracket Tube

Weight Its weight is about 0.1 kg
Usage It is used on tubes with outer diameter of 38 mm.

2277



Dropper Clip (49) for Large Bracket Tube

Weight Its weight is about 0.1 kg
Usage It is used on tubes with 49 mm outer diameter

2461-1



Dropper Clip (34 mm) for Register Arm Tube

Weight Its weight is about 0.1 kg
Usage It is used on tubes with outer diameter of 33.7 mm

Standard Iron & Steel Items

Clips

2471-1



Dropper Clip (25 mm) for Raised Register Arm

Weight Its weight is about 0.1 kg

Usage It is used on raised register arm adjuster with outer diameter of 25 mm

Standard Iron & Steel Items

Clips

5063-1 & 5067



Counter Weight Guide

Weight	Its weight is about 11 kg
Usage	This arrangement is used as a guide for circular counter weights in regulated OHE termination

Iron & Steel Items

Counter Weight Items



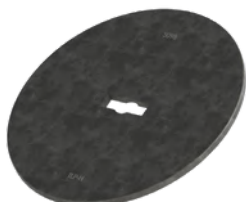
Counter Weight Eye Rod

	Weight	Usage
5094 (1.0 M)	Its weight is about 2.7 kg	Style 1 to be used in circular counter weight assembly and Style 2 to be used in trapezoidal counter weight assembly
5094-1 (0.65 M)	Its weight is about 2.037 kg	Style 1 to be used in circular counter weight assembly and Style 2 to be used in trapezoidal counter weight assembly
5095 (1.3 M)	Its weight is about 3.504 kg	Style 1 to be used in circular counter weight assembly and Style 2 to be used in trapezoidal counter weight assembly
5099 (1.55 M)	Its weight is about 4.10 kg	

Standard Iron & Steel Items

Counter Weight Items

5098



5kg. Counter Weight Plate

Weight Its weight is about 5.000 kg
Usage It is used in light counterweight assembly for tramway type ohe (regulated)

Distance Rods

5183



Double Eye Distance Rod (20 mm)

Weight Its weight is about 2.8 kg
Usage It is used to provide tensioning support to 9 tonne insulators with cables

Electrodes

7021



Earth Electrode 3.1 m

Weight Its weight is about 10 kg
Usage To be used in a earth station

PSI-222 (Ref.1)



Earth Electrode (4.0 m)

Weight Its weight is about 12 kg
Usage To be used in typical arrangement of an earth electrode at traction sub-station

Standard Iron & Steel Items

Eye

2422-2



Register Arm Eye Piece (25mm) (Forged)

Weight Its weight is about 0.730 kg

Usage This item is used in the 25mm register arm.

2541



BFB Steady Arm Eye Piece

Weight Its weight is about 0.211 kg

Usage It is used in BFB assembly in cantilever assembly

6068-1



Ball Eye

Weight Its weight is about 0.550 kg

Usage It is used in termination hardware

Standard Iron & Steel Items

Guy Rod Assembly

5002



Guy Rod Stirrup

Weight Its weight is about 2.258 kg

Usage To be used for mast fittings.

5220-1



Guy Rod Double Strap Assembly (100)

Weight Its weight is about 2.639 kg

Usage To be used for guy rod assembly fittings.

5220-2



Guy Rod Double Strap (150/250)

Weight Its weight is about 4.266 kg

Usage To be used for guy rod assembly fittings.

Iron & Steel Items

Guy Rods



Guy Rod DIA

Weight

Usage

5004
(9.3 M)

Its weight is about 35.382 kg

To be used for mast fittings.

5005
(9.7 M)

Its weight is about 36.982 kg

To be used for mast fittings.

5006-1
(5.35 M)

Its weight is about 22.182 kg

to be used for mast fittings.

5006-2
(5.35 M)

Its weight is about 22.182 kg

to be used for mast fittings.

Standard Iron & Steel Items

Hook

2160-2



Large Register Arm Hook Top & Bottom Assembly (Forged)

Weight Its weight is about 1.3128 kg

Usage It is to be used on mast fittings in cantilever & steady arm fittings.

2391-1



Steady Arm Hook (B.F.B) (Forged)

Weight Its weight is about 0.479 kg

Usage It is to be used on mast fittings in cantilever & register arm fittings.

Standard Iron & Steel Items

Hook

3232



Mast Guy Rod (Welded)

Weight Its weight is about 4.099 kg

Usage It is used in mast fitting to provide support to mast and guy rod

Standard Iron & Steel Items

Mast Fittings

3021-1



Mast Fitting for Hook Insulator (Forged)

Weight Its weight is about 1.137 kg

Usage It is to be used with hook insulator

3231



Mast Anchor Fitting (Welded)

Weight Its weight is about 3.380 kg

Usage It is used in mast fitting to provide support to anchoring of messenger cables with other fittings

Standard Iron & Steel Items Plates

5191



Compensating Plate

Weight Its weight is about 2.236 kg
Usage It is to be used for conductors having equal tension and regulated

5192



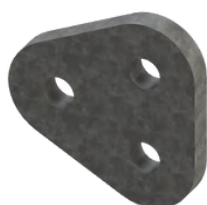
Equalising Plate

Weight Its weight is about 3.868 kg
Usage

- It is to be used on fixed termination end of regulated OHE having equal tension of conductor.
- Termination end of unregulated OHE.

Standard Iron & Steel Items Plates

5193



Short Equalising Plate

Weight Its weight is about 1.463 kg
Usage It is used to provide tensioning support to cables and contact wire

Standard Iron & Steel Items

Sleeves

2403-2



Tubular Stay Sleeve (Forged)

Weight Its weight is about 0.364 kg
Usage The fitting shall be used with 25 mm nominal bore tube

Straps

6181-1



Section Insulator Double Straps Assembly

Weight Its weight is about 0.133 kg
Usage to be used in section insulator assembly

Swivels

2352



Bent Steady Arm Swivel

Weight Its weight is about 0.240 kg
Usage It is used in cantilever with steady arm

2392



BFB Steady Arm Swivel

Weight Its weight is about 0.375 kg
Usage It is used in BFB assembly in cantilever assembly

Standard Iron & Steel Items

Swivels

2542



BFB Steady Arm Swivel

Weight Its weight is about 0.375 kg
Usage It is used in BFB assembly in cantilever assembly

Termination Fittings

0225 Style 1 & 3



Earthwire termination – Style 1 & 3

Weight Its weight is about 3.5 kg
Usage This item is used for typical general arrangement of earth screen wire termination at traction sub-station

0225 Style 2 & 4



Earthwire termination – Style 2 & 4

Weight Its weight is about 2.5 kg
Usage This item is used for typical general arrangement of earth screen wire termination at traction sub-station

0225 Style 5



Earthwire termination – Style 5

Weight Its weight is about 3.8 kg
Usage This item is used for typical general arrangement of earth screen wire termination at traction sub-station

Standard Iron & Steel Items

Termination Fittings

0225 Style 6



Earthwire Termination – Style 6

Weight Its weight is about 7.8 kg
Usage This item is used for typical general arrangement of earth screen wire termination at traction sub-station

ST 501R Style 1



132 Kv String Bus Termination Arrangement for Zebra ACSR

Weight Its weight is about 10.75 kg
Usage This item is used for terminating for zebra conductor

ST 501R Style 2



Earthwire Termination

Weight Its weight is about 8.3 kg
Usage This item is used for terminating for zebra conductor



Our DC-AC Customized and Standard Products

Our Products



Customized Copper Items

Parallel Clamps

PG 375

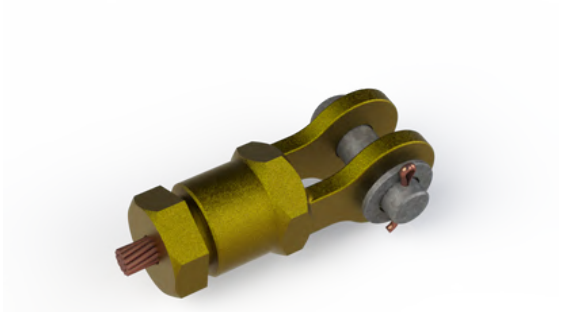


Parallel Clamp for 160 mm² Jumper Wire to 129 mm² Catenary Wire or 105 mm² Jumper Wire or 150 mm² wire

Standard Copper Items

Ending Clamps

CW/TD/DC-AC/P/001A aka FM/DC-AC/1



Ending Clamp for 242 mm² Catenary

Weight Its weight is about 1.0 kg
Usage This ending clamp is used with 37/2.92 mm (242 mm²) catenary wire

CW/TD/DC-AC/P/002 aka FM/DC-AC/12



Ending Clamp for 193 mm² Contact

Weight ts weight is about 1.0 kg
Usage This ending clamp is used for contact wire of size 193 mm²

		
Ending Clamp		
FM/DC-AC/2	Weight Its weight is about 0.9 kg	Usage This ending clamp is used with catenary wire of size 19/2.95 mm (129 mm ²)
FM/DC-AC/20	Weight Its weight is about 1.9 kg	Usage This ending clamp is used with 37/3.35 mm (323 mm ²) catenary wire

Standard Copper Items

Parallel Clamps

CR/OHE/DC-AC/102



Parallel Clamp for 160 mm² Jumper Wire to 242 mm² Catenary Wire

Weight Its weight is about 0.7 kg

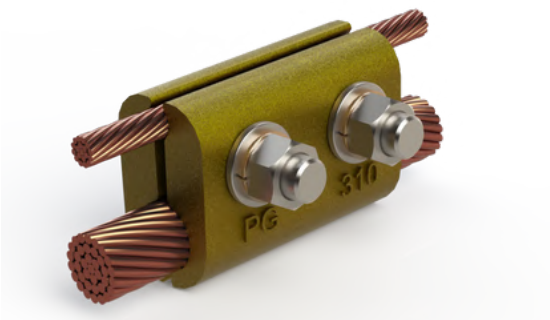
CW/TD/DC-AC/P/010 aka FM/DC-AC/7



Parallel Clamp for 242 to 129/105/150

Weight Its weight is about 0.7 kg

CW/TD/DC-AC/P/011 aka FM/DC-AC/14



Parallel Clamp for 50/65 to 242 Catenary

Weight Its weight is about 0.6 kg

CW/TD/DC-AC/P/012



Parallel Clamp for 242 mm² Catenary Wire to 242 mm² Catenary Wire

Weight Its weight is about 1.4 kg

Standard Copper Items

Parallel Clamps

FM/DC-AC/8



Parallel Clamp for 323 to 129/105/150

Weight Its weight is about 1.4 kg

FM/DC-AC/13



Parallel Clamp for 50/65 to 193/129

Weight Its weight is about 0.3 kg

FM/DC-AC/15



Parallel Clamp for 193 Contact to 129/105/150

Weight Its weight is about 0.4 kg

FM/DC-AC/21



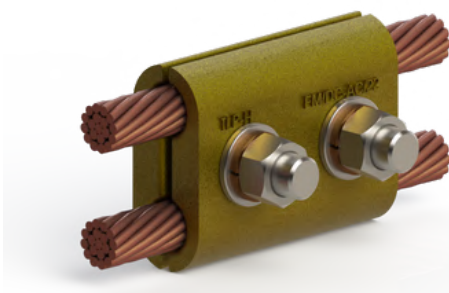
Parallel Clamp 160 to 193/129

Weight Its weight is about 0.6 kg

Standard Copper Items

Parallel Clamps

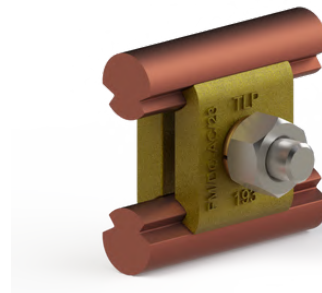
FM/DC-AC/22



Parallel Clamp for 129/105/150 to 129/105/150

Weight Its weight is about 0.6 kg

FM/DC-AC/23



Parallel Clamp for Double Contact Wire (193)

Weight Its weight is about 0.1 kg

Usage This clamp is used in 193 sq mm double contact wire

FM/DC-AC/24



Parallel Clamp for 323 Catenary to 160 Jumper

Weight Its weight is about 1.4 kg

FM/DC-AC/25



Parallel Clamp for 323 to 323 Catenaries

Weight This clamp is used in two 323 mm² catenary wire

Standard Copper Items

Parallel Clamps

FM/DC-AC/33

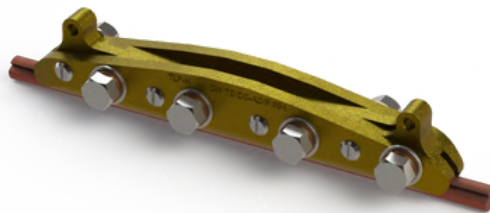


Parallel Clamp for 323 Catenary to 242 Catenary

Weight Its weight is about 1.4 kg

Splicing Clamps

CW/TD/DC-AC/P/004 aka FM/DC-AC/5



Splicing Clamp (Crocodile Type)

Weight Its weight is about 1.6 kg

Suspension Clamps

CW/TD/DC-AC/P/003



Suspension Clamp for 323/242 Catenary Wire (New Suspension Clamp)

Weight Its weight is about 1.1 kg

Standard Copper Items

Suspension Clamps

FM/DC-AC/18

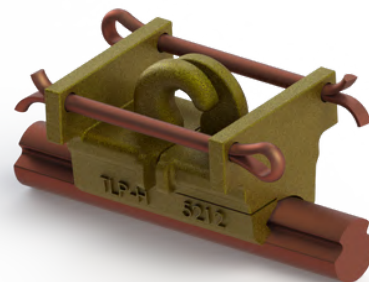


Suspension Clamp for 129 mm² Catenary Wire

Weight Its weight is about 1.0 kg

Dropper Clips

5212



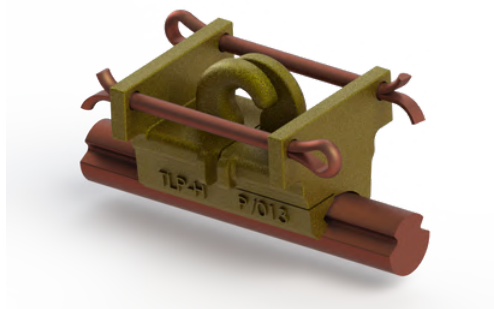
Dropper Clip for 193 mm² Contact Wire (Antifalling)

Weight Weight – Its weight is about 0.1 kg

Usage It is a dropper clip for 193 sq. mm. contact wire in DC-AC current

Dropper Clips

CW/TD/DC-AC/P/013 aka FM/DC-AC/9



Dropper Clip for 193 mm² Contact Wire (Antifalling)

Weight Its weight is about 0.1 kg

Usage It is a dropper clip for 193 sq. mm. contact wire in DC-AC current

CW/TD/DC-AC/P/014 aka FM/DC-AC/11



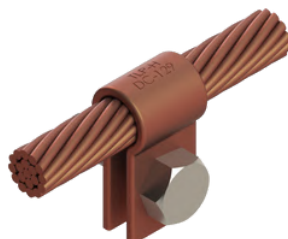
Dropper Clip for 242 mm² Catenary Wire

Weight Its weight is about 0.1 kg

Standard Copper Items

Dropper Clips

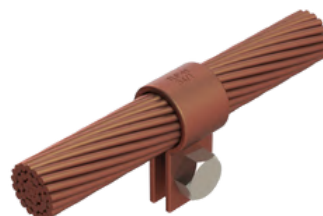
FM/DC-AC/10



Dropper Clip for 129 mm² Catenary Wire

Weight Its weight is about 0.1 kg

FM/DC-AC/34

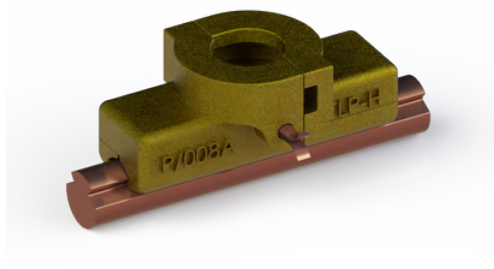


Dropper Clip for 323 mm² Catenary Wire & 5 mm Solid Wire

Weight Its weight is about 0.1 kg

Swivel Clips

CW/TD/DC-AC/P/008A aka FM/DC-AC/19



Contact Wire Swivel Clip for 193 mm²

Weight Its weight is about 0.2 kg

Copper Sleeve

FM-DC-AC-29



Copper Sleeve

Weight Weight – Its weight is about 0.009 kg